

Compact Interior Projects

Max Compact Panels
Max Compactforming
Max Individualdekor
FunderMax Elements



interior

for
people
who
create

Table of Contents

04	Quality
08	Education Institutions
16	Wall Cladding
34	Shopfitting
42	Furniture
52	Cubicles and Lockers
64	Washbasins
66	Railings
70	Ceilings
72	Airport
74	Metro Station
76	Hospital Facilities

The applications shown are from projects realized with FunderMax.
Please note in the planning and design that the respective building codes
may require different design solutions.

Project _ Bühne im Hof
Country _ St. Pölten, Austria
Design _ Solid Architecture
Decor _ 0085

for people who create

Space for ideas.

Live, work, study, sleep, sweat, chat ... almost every room is home to a different facet of our lives, and each has its specific requirements in terms of construction and design. Individual spatial planning is therefore a must. And at the same time a driving force behind the development and realization of innovative and independent ideas.

With FunderMax Compact Interior, you have a wide range of options available, as varied as your imagination.

FUNDERMAX

Compact Interior

FunderMax Compact Interior panels are high-pressure laminate panels (HPL) manufactured to standard EN 438 that are produced in laminate presses under high pressure at high temperature. They are particularly suitable for demanding and decorative applications (e.g. furniture, office furniture, wall cladding, sanitary facilities etc.).



Scratch resistant



Easy to clean



Solvent resistant



Heat resistant



Food grade



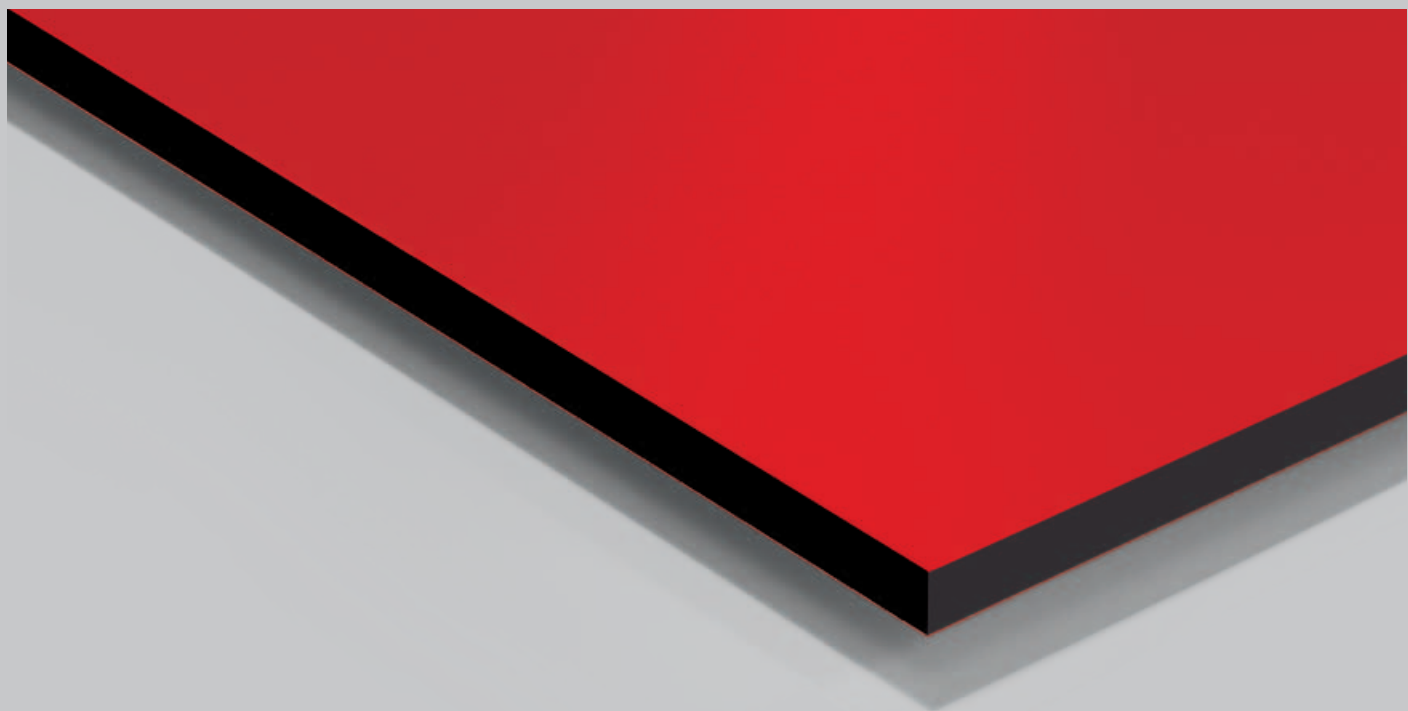
Quick installation



Impact resistant



Durable



Features:

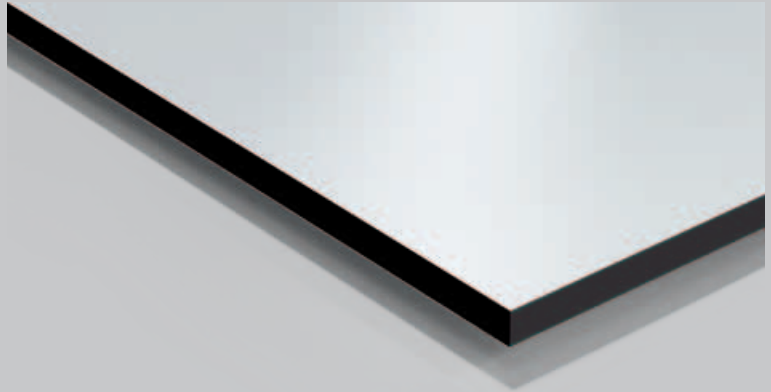
- __ Food grade (ISEGA 28468 v 09)
- __ hygienic
- __ Scratch resistant
- __ Solvent resistant
- __ Abrasion proof

- __ Easy to clean
- __ Impact resistant (EN ISO 178)
- __ Suitable for all interior applications
- __ Decorative
- __ Self-supporting

- __ Bending resistant (EN ISO 178)
- __ Frost and heat resistant (-80°C to 180°C (DMTA-OFI 300.128))
- __ Easy to install
- __ Durable
- __ Resistant to chemicals

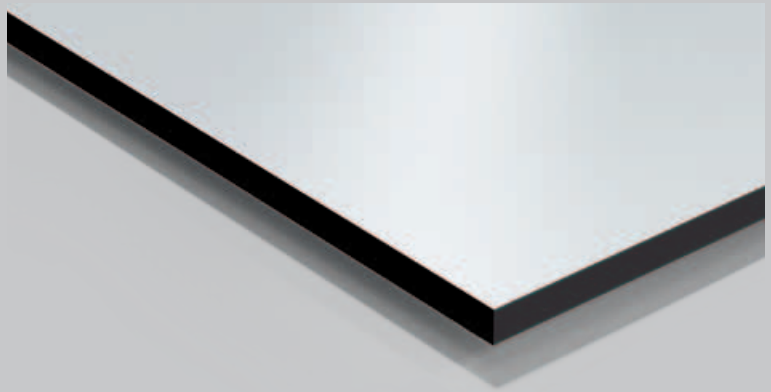
Max Compact Interior

As a standard, Max Compact panels come with decors on both sides. The core is black and the surfaces are available in different structures. See our current delivery programme.



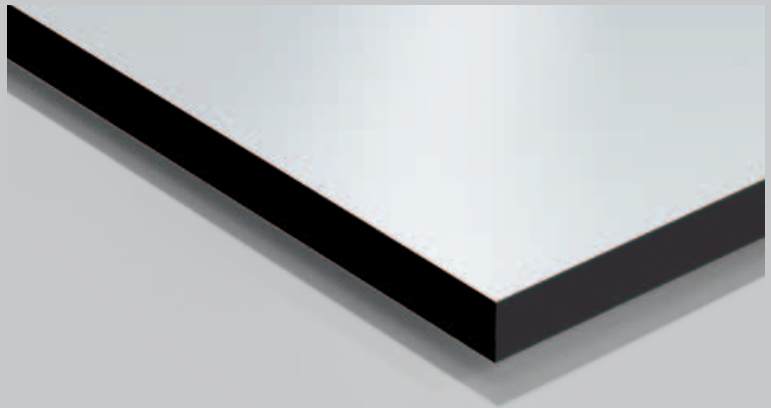
Max Compact Interior Plus

Max Compact Interior Plus panels have the same qualities as the Compact Interior and Max Alucompact, but are manufactured with a double-hardened, pore-free surface sealed with urethane acrylate for increased surface protection. Decor – Please refer to the Decor Collection IP.



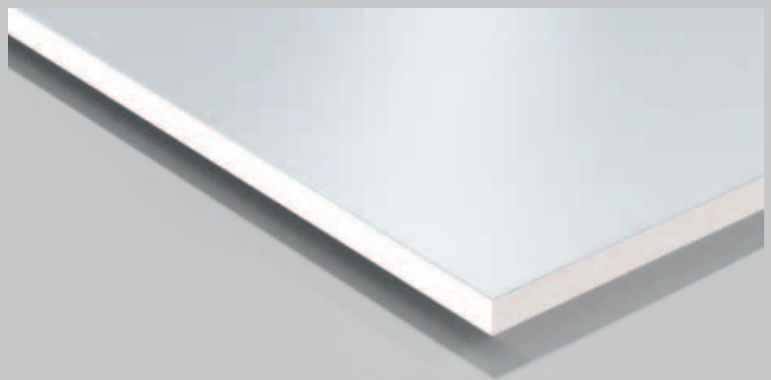
Max Resistance (Type CGS manufactured to standard En 438-4)

Max Resistance panels are Compact Interior panels with an integrated chemical-resistant surface. Decor – Please refer to the Decor Collection RE.

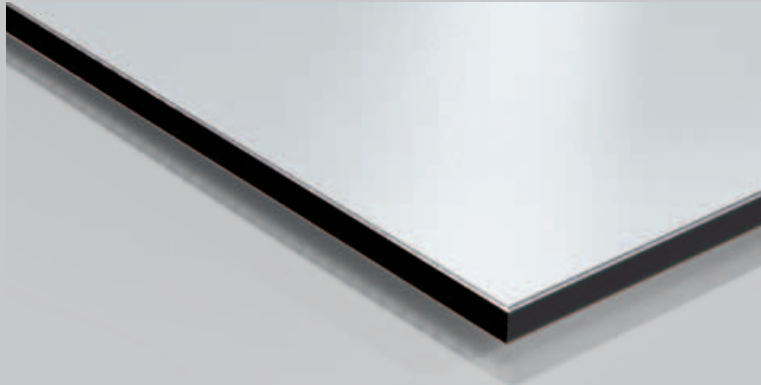


Max Compact with White Core

Though similar in form and function, these Compact panels exhibit the fine stylish difference: The panel core remains an exquisite white. Slight colour differences to the Max Laminate panels and Max Compact panels with a black core are possible. When combining panels, please compare the samples. Decor is always the same on both sides.

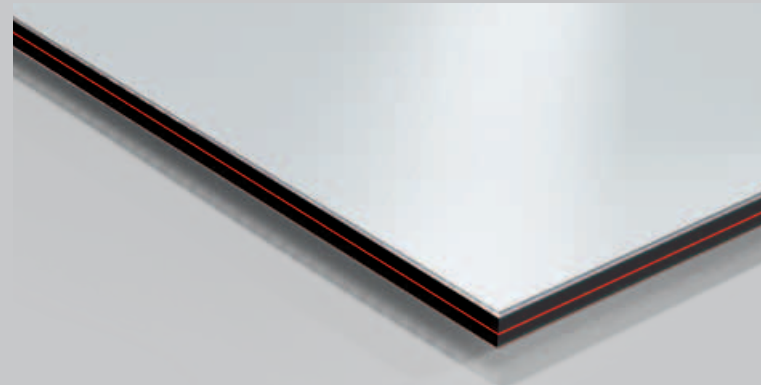


Quality and the Environment



Max Alucompact (42, 06)

The design is the same as the Max Compact Interior panel, but is additionally provided (on both sides) with aluminium bands under the decorative layers or in the core. This ensures that even perforated panels are extremely stable. Furthermore, this panel type can be used as wall cladding without rear ventilation. In furniture applications, the edges stand out as modern design elements.



Max Protect

Max Protect are Compact Interior panels with an Alpha Protect layer that provides almost 100 % protection against electromagnetic radiation.



Max Compactforming Elements

Through a patented process with a special core structure, flat Max Compact Interior panels are postformed into functional elements.



FunderMax Elements (processing)

FunderMax offers CNC controlled processing and panel cutting. With state-of-the-art devices, it is possible to produce everything: from simple cutouts for mounting the panels, to intricate milling for railing fillers or furniture elements. We can make just about anything you can dream up.

Natural materials

FunderMax Compact Interior panels are made primarily from wood that is processed into "kraft papers". The wood accumulates as a by product during logging or in sawmills. We procure these raw materials from suppliers that are certified under the FSC and PEFC standards. The standards confirm that the logging occurs in accordance with internationally valid rules for sustainable forestry.

Environmentally Friendly Production

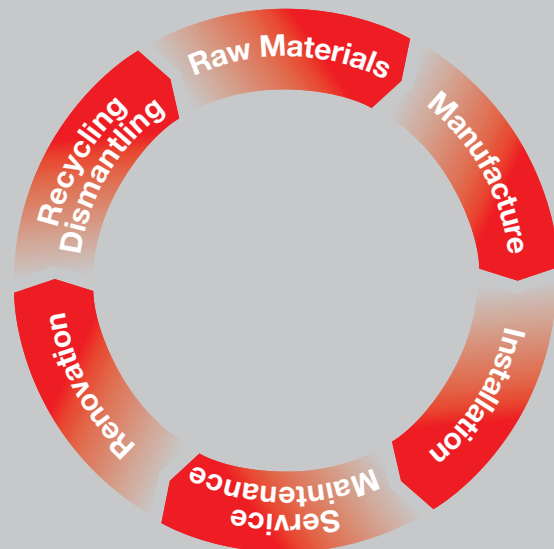
The kraft paper is impregnated with resins on impregnating lines, dried and pressed at high pressure and heat into durable moisture resistant panels. The exhaust air extracted from the drying is treated by regenerative thermal oxidation in which heat produced thereby is redirected back into the process. For installing this efficient air handling FunderMax was given the best practice the "climate:active" award by the Austrian Energy Agency and the Federal Ministry for the Environment. The production plant can thus reduce its emissions by approximately 10,000 tons of CO₂ per year.

Long-lasting and maintenance-free

Extensive tests certify the exceptional durability of Compact Interior panels. The production process ensures a highly resistant surface. FunderMax Compact Interior panels do not require any maintenance to ensure a long service life. The surface of the panels is highly resistant to soiling. If necessary, they can be cleaned with standard cleaning agents. It is not necessary to seal the edges, even after cutting. The robust surface is also suitable for highly stressed applications such as ramming protection and is highly resistant to impact marks.

Disposal / Recycling

Off-cuts are energetically recycled in-house. In our state-of-the-art green electricity district heating power stations no harmful exhausts arise such as dioxin, hydrochloric acid or organic chlorine compounds. The residual ashes are free of heavy metals. Basically, the specific provincial laws and regulations concerning the disposal must be observed. In Austria, the thermal recycling of waste is preferable to landfill. The ash resulting from the thermal recycling of waste can be easily disposed of in controlled industrial landfills.



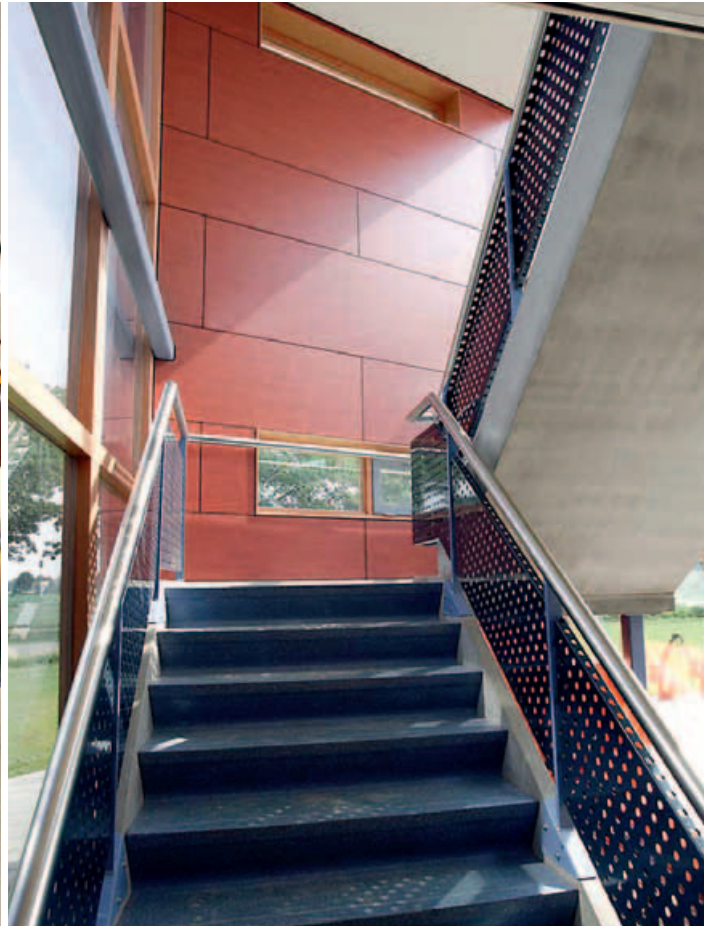
Educational Institutions / Sports Facilities

- __Break-proof
- __Easy to clean
- __Visually appealing due to secret fastenings



Hard times.
School is tough, especially for the school interior which has to withstand thousands of students every day. All the more important that Max Compact panels can stand up to stress and impact, and that from first to last bell.

Project __ Brede School Oude Landen
Country __ Nuenen, Netherlands
Design __ KDV Architecten
Decor __ 0162, 0168, 0169



Educational Institutions

- __Hygienic
- __Decorative
- __Durable



- __Print of the complete syllabus from A-Z in the school cafeteria as an individual design solution with Max Individualdekor
- __Wall cladding and furniture

interior



Project __ G 8 High School Erding
 Country __ Erding, Germany
 Design __ Heilmaier Planning Group
 Decor __ Individualdekor, 0741

Educational Institutions

__Motifs that span across multiple panels and panel formats

__Unique

__Impact resistant



Project __Anne Marburg School (Vocational School W3)

Country __Hamburg, Germany

Design __Kleta Architects

Decor __Individualdekor



Project_Holzkompetenzzentrum
Country_St. Veit/Glan, Austria
Design_Spado Architects
Decor_Individualdekor

Educational Institutions

- __ Attractive
- __ Long-lasting
- __ Sturdy



Project __ IMC University of Applied Sciences Krems
Country __ Krems, Austria
Design __ DFA Feichtinger Architects/List General Contractor GmbH
Decor __ 0067, 0085, 0275
Photos __ IMC UAS Krems



— Tables and chairs made from
Max Compact panels and Max
Compactforming elements
— Slender modern material


interior

Wall Cladding

__Can be printed

__Can be glued

__Can be cut



Whatever you like is possible.
Design your own individual Max Compact panels just the way you want. You can either glue your motif on the FunderMax panel, or have it pressed directly into the panel with Max Individualdekor. Your imagination is the only limit.

Project __Stadion Center Shopping Mall, Vienna

Country __Vienna, Austria

Design __Loistl & Loistl Projektconsultant GmbH

Decor __0328, 0079

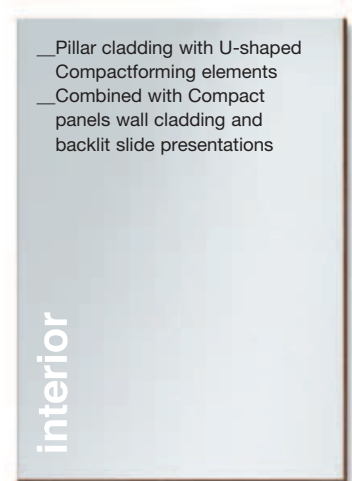


Wall Cladding

- __Rounded edges
- __Tight radius
- __Durable



Project__FunderMax Information Center
Country__Wr. Neudorf, Austria
Design__FunderMax GmbH
Decor__0328, 0630



Wall Cladding

__Natural core colour

__Scratch resistant

__Design freedom

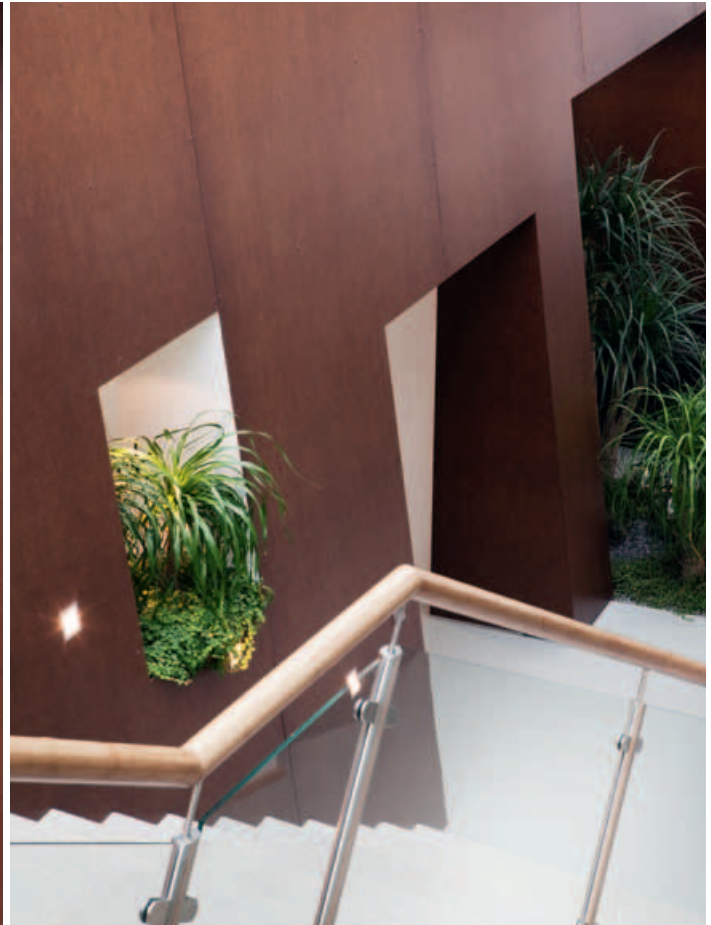


Project __KPS Kotlik Prokopp Stadler Top Floor

Country __Guntramsdorf, Austria

Design __Architect Lothar Jell-Paradeiser in Cooperation with Arge x42

Decor __Authentic Natura



Wall Cladding

- __Elegant woodgrains
- __Clear structures
- __Can be combined with other materials



Project Prime Ministry Social Assistance and Solidarity Fund Building
Country Ankara, Turkey
Design Ziraat Bank Design Office
Decor 0203



Project_Hospital Cafeteria
 Country_Ankara, Turkey
 Design_Anshen & Allen / Turhan Kayasu
 Decor_0160

The atmosphere of a room is strongly influenced by the wall design. That is why the warm wood decor of the FunderMax collection creates a positive, comfortable atmosphere, even in normally cooler places such as foyers.

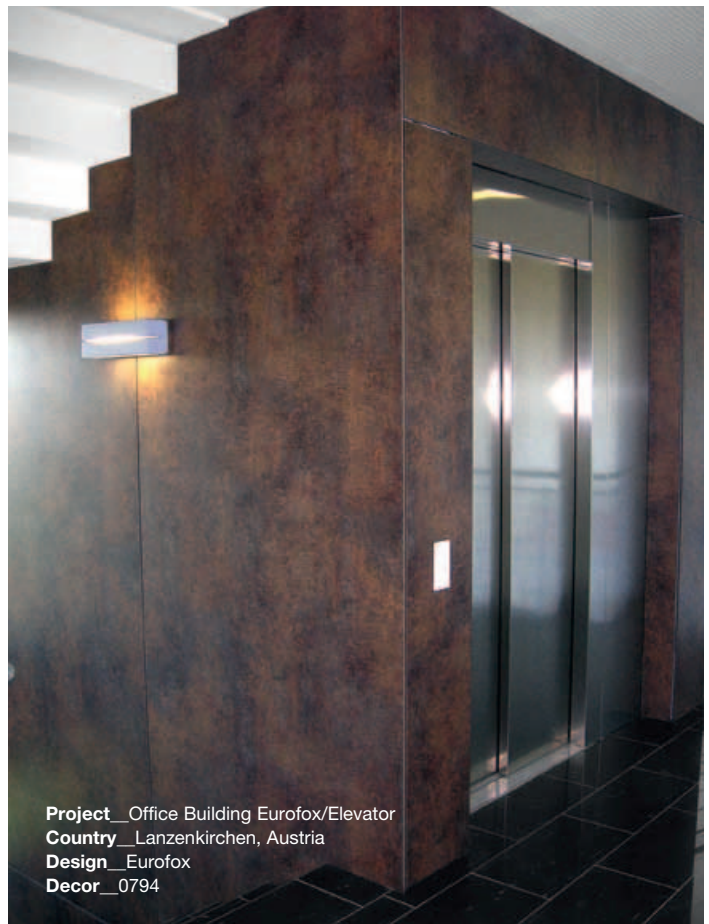


- __ Breaking-up of large surfaces with joint structures
- __ Wide range of the decor collection IP

interior

Wall Cladding

- __Economical due to a variety of sizes
- __Many fixing options
- __Can be easily adapted to the given structure



Project __Office Building Eurofox/Elevator
Country __Lanzenkirchen, Austria
Design __Eurofox
Decor __0794



Project__Obermurtaler Cooperative Brewery, Depot Graz
Country__Graz, Austria
Design__Planning Group Viereck, DI Kurt Györög
Decor__P941 (Individualdekor)

Wall Cladding

- __Create structures
- __Smooth hygienic surfaces
- __Decorative




Project __Spa Hotel Bründl
Country __Bad Leonfelden, Austria
Design __Team M Architects, Linz
Decor __0169



Wall Cladding

- __A variety of colours
- __Matches the colours of other FunderMax products
- __Matches the surface of other FunderMax products



Whatever takes your fancy.
Every day there are thousands of ideas swirling around in our heads just waiting to finally take shape. For with the Individualdekor from FunderMax there is only one rule to remember: Nothing is impossible.

Project __Ice Skating Rink Villach
Country __Villach, Austria
Design __Architectural Offices of DI Traninger ZT-KEG
Decor __P933 Fur (Individualdekor)



Project_ South Terminal - Breakthrough Toilet Fit-out
 Country_ Airport Gatwick, London, UK
 Design_ Capita Architecture
 Decor_ 0717, 0718, 0733, 0305



— The surface quality of Individualdekor is the same as that of standard decors.
 — Selected Individualdekor motifs are available in different colour combinations

interior

Wall Cladding

- __Proven applications
- __Can be individually combined
- __Visually appealing



Project__ Kai-West Office Building
Country__ Vienna, Austria
Design__ fmm Architects Feitzinger Mühlbacher Marschalek
Photo__ CPB Immobilienreuehand GmbH
Decor__ Individualdekor

Made to be tough.
Where safety absolutely has to come first, Max Compact panels are up to the job with exceptionally high quality standards: under the robust and scratch resistant surface lies a solid core, specifically tested for applications with high requirements for fire resistance.

__Beauty does not have to take a back seat if Max Compact panels are on board. Without make-up, manufactured to standard EN 438, Max Compact panels make quite the figure fulfilling every requirement.

interior



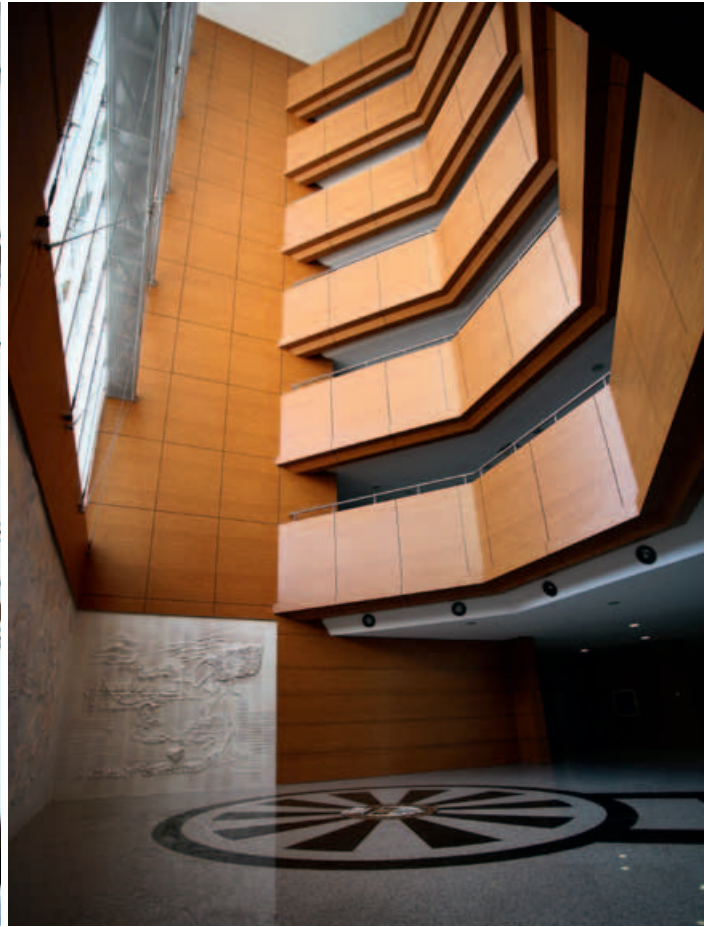
Project__Business Center Wienerberg
Country__Vienna, Austria
Decor__0680

Wall Cladding

- __Quality in every position and level
- __Wide variety of fixing possibilities
- __Optimally cut sizes



Project__ Union of Turkish Bar Associations Building
Country__ Ankara, Turkey
Design__ Haldun Erdogan
Decor__ 1260



Shopfitting

__Self-supporting material

__Trendy colours

__Optimal shapes

Design-oriented.

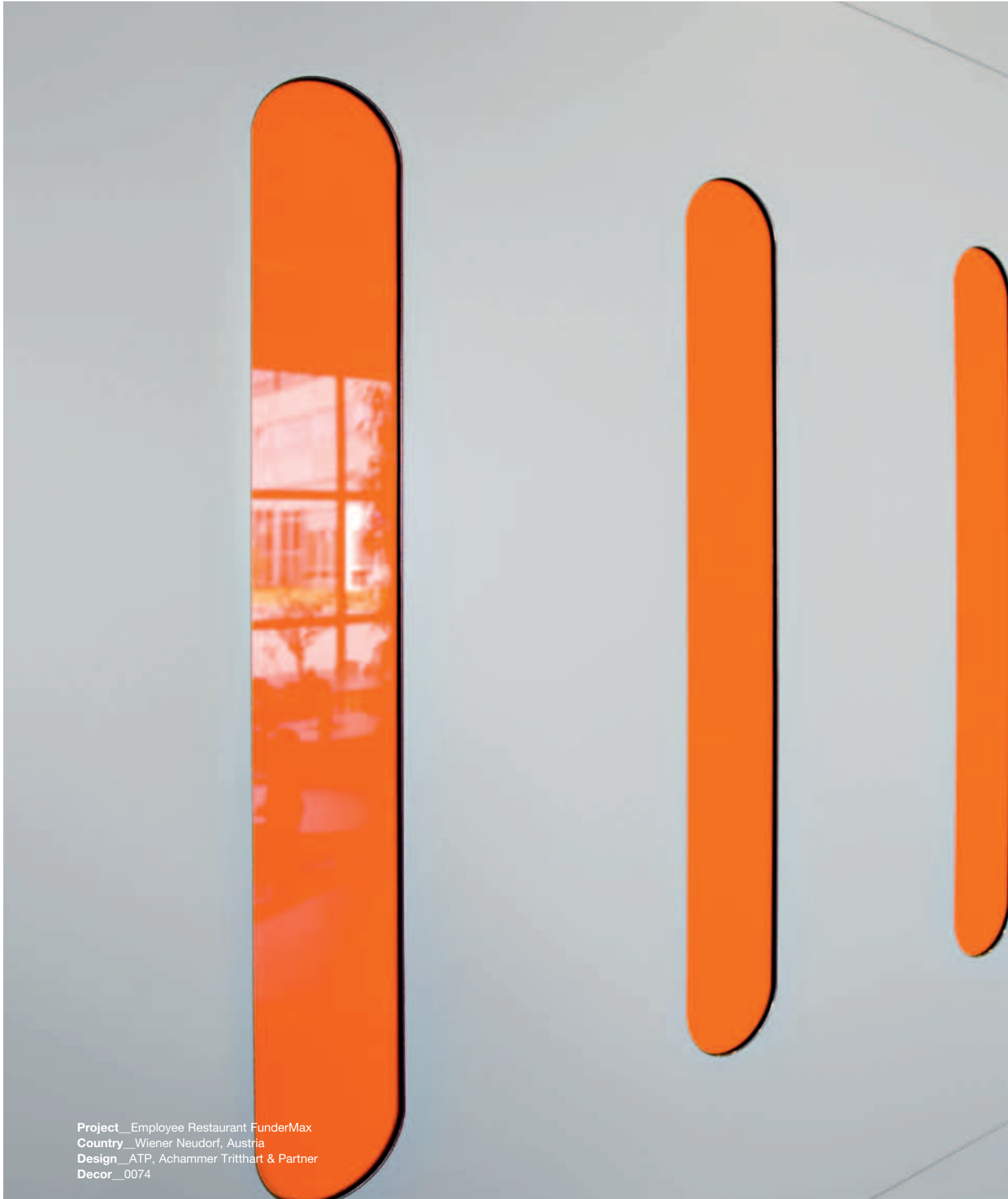
Shop systems with Max Compactforming elements emphasize the sweeping curves of the motorcycles and cars on the showroom floor. Powerful colours draw attention to the strong engines under the hoods. Combined with Max Laminates in postforming quality, the furniture range in the shop is presented with sophistication.

Project __Suzuki Shop Concept
Country __Suzuki Dealer Austria
Design __Gerold Peham
Decor __0608, 0212

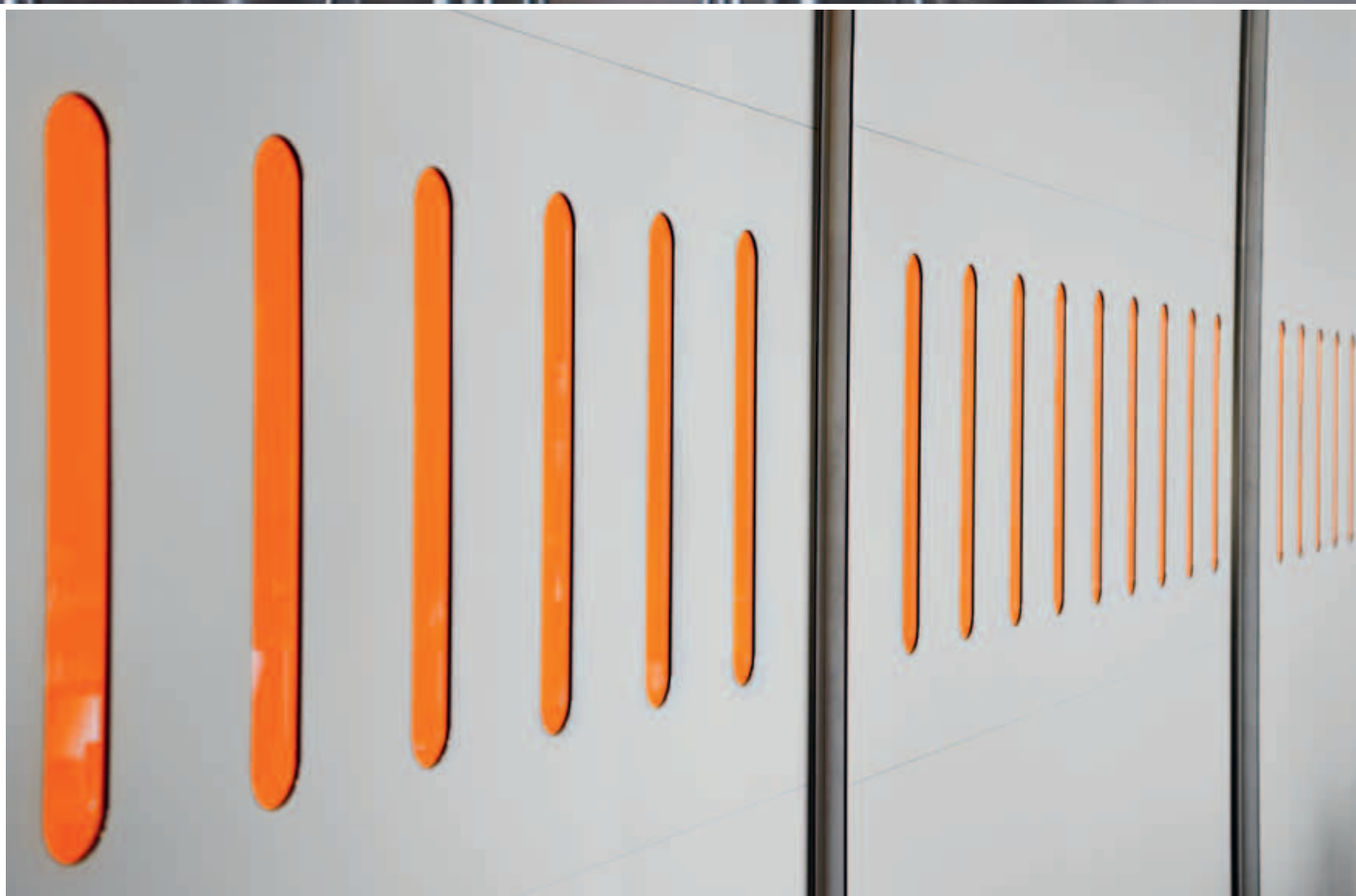


Shopfitting

- __Free-form milling possible
- __No edging required
- __Aluminum inlays ensure stability



Project__Employee Restaurant FunderMax
Country__Wiener Neudorf, Austria
Design__ATP, Achammer Tritthart & Partner
Decor__0074



Shopfitting

- __Slender, elegant material
- __Prefabricated elements
- __Sturdy



Project __Boutique Emmanuelle
Country __Rennes, France
Design __Phenome Architectures
Decor __0074
Photo __Sandrine Tardif Photographe



Shopfitting

__Formed edges provide excellent sturdiness

__Milled lettering

__Long elements



Project__Schwechat Airport Bus Gates

Country__Schwechat, Austria

Design__Architektur Maurer

Decor__0085, 0203

- __Manufactured from a single piece
- __Largely self-supporting structures possible
- __Easy to machine

interior



Project_Bühne im Hof
Country_St. Pölten, Austria
Design_Solid Architecture
Decor_0085

Furniture

- __White or black core colour
- __Natural or clear structure
- __Straight or sweeping contours



Project __Private Kitchen
Country __Vienna, Austria
Design __Ivo Dolezalek/Lena Schacherer
Decor __Authentic
Photo __Karoline Mayer

Hard shell, white core.
 It is precisely the details that often make all the difference. With the Max Compact with white core the only difference is in the white core of the panel, but it is exactly this design detail that stands out in modern furniture making.



Project Trade Fair Information Counter
 Country Wiener Neudorf, Austria
 Design Ernst Huemer
 Decor 0085

— Natural structure of the core layers or through and through white
 — With Max Compact playful shapes or cutouts are child's play

interior

Furniture

- __Clear shapes
- __Rounded long edges
- __Discrete substructures



Project __Architecture University Cafeteria
Country __Prague, Czech Republic
Design __Architect Ing. arch. Daniel Smitka
Decor __0725, 0755, 0742

Strikingly different.

In the flood of mass-produced goods, custom furniture design demonstrates more than ever style and status, both professionally and personally. Sit, lie, eat, work etc. the way you like, with the wide variety of solutions offered by FunderMax Compact panels.

- __Different radii available
- __L elements, U elements,
S elements and special shapes
possible

interior



Project _ Apo Mobile
Country _ Vienna, Austria
Design _ design by f maurer/vienna
Decor _ 0635
Photos _ whatashot

Furniture

- __Self-supporting or floating
- __Refreshingly bright or subtle dark
- __Scratch resistant and sturdy



Project __Private Table
Country __Vienna, Austria
Design __design by f maurer/vienna
Decor __0085



Project_Stilo AG Office Furniture
Country_Bühler, Switzerland
Design_Stilo AG
Decor_0080

Furniture

- __Slender body
- __Wafer-thin surfaces
- __Design-oriented edges



Project __CORE C-350 Furniture System
Country __Zurich, Switzerland
Design __CORE AG / Design Works /Balz Steiger
Decor __0067



Project CORE C-350 Furniture System
Country Zurich, Switzerland
Design CORE AG / Design Works /Balz Steiger
Decor _0080



Project STRATOS C-210 Table
Country Zurich, Switzerland
Design CORE AG / Design Works /Balz Steiger
Decor _0080

Furniture / Laboratory Facilities

- __Double hardened surface
- __Solvent resistant
- __Seamless worktop surface more than 4 m long

Always on top.

Max laboratory panels (Resistance) are especially suitable for use in laboratories, hospitals and research centers due to their special double hardened surface. As a worktop surface or as a cabinet front, they meet the toughest requirements in terms of hygiene and are extremely chemical resistant.

Project __Trade Fair Object Laboratory Furniture
Country __Wiener Neudorf, Austria
Design __Ernst Huemer
Decor __0663



—Black core
—All the furniture elements are available in different thicknesses and the same designs

interior

Cubicles and Lockers

- __Smooth, easy-to-clean surfaces
- __Durable
- __Wear resistant for heavily frequented areas



Behind closed doors.

Available in various sizes, Max Compact panels can be installed quickly and easily in a wide variety of areas, e.g. for cubicles or lockers. With the comprehensive decor selection ranging from uni-colour to wood or anything you can dream up, a mere privacy screen can also be a real eye-catcher all at the same time.

- __Easy-to-cut sizes
- __Matches well with aluminum profiles and fittings
- __The collection has more than just white

interior



Project__Bazén Kraví Hora
Country__Brno, Czech Republic
Design__DRNH architektonická kancelář
Decor__0085

Cubicles and Lockers

- __Cutting and milling service
- __Quick installation
- __Breaking-up with colour variations

Assistance.

Wherever you need help or support. FunderMax will advise you and provide solutions for your design problem. With architectural consultants or application technology experts. First aid is available any time of day or night online at www.fundermax.at.

Project__First Aid Center
Country__Zagreb, Croatia
Design__Produkcija 004/Davor Katušić, d.i.a. and team
Decor__0725, 0635, 0500



Cubicles and Lockers

- __Water resistant
- __Decorative
- __Free edge shapes



Project __ Business Center G9
Country __ Vilnius, Lithuania
Design __ Antanas Gvildys
Decor __ P934



Cubicles and Lockers

- __ Seating surfaces and corners made from Compactforming elements
- __ All components made of a single material
- __ Can be used with standard fittings





Project_Mineral Swim School Baden
Country_Baden near Vienna, Austria
Design_Architecture Association Nemetz, Junger, Weber
Decor_0703

Cubicles and Lockers

__Composite surfaces

__Composite decor

__Product mix of Compact panels and decorative laminates



Project __ Bath House Bad Boll

Country __ Bad Boll, Germany

Design __ Schäfer Trennwandsysteme GmbH

Decor __ 0470, 0077



Cubicles and Lockers

- __Subtle colours
- __Well established sizes
- __Typical HPL properties



Project __Olympia Sport Center
Country __Nordwijk / Netherlands
Decor __0238



Washbasins

- __Self-supporting
- __Hygienic surfaces
- __No gaps



Project __Wash Basin
Country __Austria
Decor __0085

Nice curves.

For facilities without corners and edges, Max Compactforming elements have proven to be both functional and aesthetic. The properties of Compactforming in HPL quality according to standard 438 EN make gap-free production of edges possible, which contributes significantly to increased hygiene in sanitary facilities.

- __Round front edges made in a single piece
- __Can be combined with porcelain or metal basins
- __Durable even in heavily frequented areas
- __Wide range of colours and decors

interior



Project _ PVA Office Building
Country _ Vienna, Austria
Design _ Architect DI Kurt Hlaweniczka
Decor _ 0612

Railings

- __Easy to process
- __Break-proof
- __Decorative



- __CNC machining with state-of-the-art machines at FunderMax
- __Aluminum reinforced core – 2 or more layers possible

interior

Project _Elementary School Kirchberg
Country _Kirchberg in Tirol, Austria
Design _Ing. Gebhard Kaindl - Architektur und Design GmbH
Decor _0074

See through.

In addition to being decorative, the wide variety of Max Alucompact panels also fulfill all the related stability requirements. A popular design solution is simple circular cutouts that also help let the light through.

Project__ Micheldorf Retirement Home
Country__ Micheldorf, Austria
Design__ Architectural Offices Mag. ABLEIDINGER & Partner ZT-Gesellschaft m.b.H.
Decor__ 0291

Railings

- __ Safe installation
- __ A variety of colours and decors
- __ Scratch resistant



Project __ College of Engineering Zeltweg
Country __ Zeltweg, Austria
Decor __ 0470



Project _ Provincial Vocational School Fürstenfeld
Country _ Fürstenfeld, Austria
Design _ Architect DI Klaus Richter
Decor _0067

_ Same decor on both sides
_ Structure large spaces with shapes and colours
_ Can be mounted on all common substructures

interior

Ceilings

- __Moisture resistant
- __Clean, smooth surfaces
- __Ideal for wet rooms



Project _Rehabilitation Center Mauer-Öhling
Country _Mauer-Öhling, Austria
Decor __0085



Project _ Swimming Pool Nitra
Country _ Nitra, Slovakia
Decor _ 0065




Project _ National Kachsiung
 First University of Science and Technology
Country _ Taiwan
Design _ Haigo Shen & Associates, Architects & Engineers
Decor _ 0741

_ Wide variety of designs from flat, to curved or preformed
 _ Max Compact panels can also be punched in certain thicknesses

interior

Airport

- __Easy to disinfect
- __Large-scale installation
- __Different shades of colour through Dualis overlays



Welcome to Vienna.
The first and last thing that travelers see are Max Compact panels, at least at the Vienna International Airport. Almost the entire airport is lined with Compact panels in a variety of decors, which thanks to their high cleaning and hygiene standards help to make Vienna one of the most desirable arrival and departure destinations in the world.

Project __Airport Schwechat Pear East
Country __Schwechat, Austria
Design __Baumschlagler Eberle Wien ZT GmbH
Decor __0085, 0074 und Dualis Astro



_ Tested surface IP recommended for very heavily frequented buildings
 _ Secret fastenings with glue for wall protection and wall cladding

interior

Metro Station

- __Robust
- __Vandalism proof
- __Graffiti proof



Project _ Metro Stations Vienna
Country _ Vienna, Austria
Design _ Architect Group U-Bahn/Holzbauer-Marschalek-Ladstätter-Gantar
Decor _ 0085

Timeless.

For two decades, the Vienna metro stations have been clad and furnished again and again with Max Compact panels. And despite being used by thousands of passengers every day, the surfaces are in good condition and the cores are stable.

- __ Seating and litter bins from Max Compactforming
- __ Ceilings and walls clad with partially punched Compact panels

interior



Project_Metro Stations Vienna
 Country_Vienna, Austria
 Design_Architect Group U-Bahn/Holzbauer-Marschalek-Ladstätter-Gantar
 Decor_0085

Hospital Facilities

- __Combinable products
- __Composite surfaces
- __Composite decor

Complete care.

For uniform, clear, and therefore soothing interior decorations, FunderMax offers furniture and furnishings from a single source. Door finishes, cabinet bodies, front or wall protections, all the materials are available in the same decor and with the same surface.

Project __Tappeiner Hospital
Country __Merano, Italy
Design __Novotny Mähner & Assoziierte
Decor __0085



Project_Barmherzigen Schwestern Hospital
Country_Linz, Austria
Design_Architectural Offices Mag. ABLEIDINGER & Partner ZT-Gesellschaft m.b.H.

Hospital Facilities

- __Impact resistant
- __Hygienic surfaces
- __Easy to clean



Spacious.

FunderMax Compact panels make your work easier, especially when implementing major projects. The varied and flexible use of horizontal and vertical directions allow you best approach to every design challenge. Break-up sober surfaces for example with warm wood decor or create modern designs with a conscious mix of materials.

- __Clear language of form
- __Can be arranged to create patterns
- __Emphasizes the architecture

interior



Project _ Waldviertelklinikum Hospital
Country _ Allenstein, Austria
Design _ Architect Maurer
Decor _ 0085

FunderMax France
3 Cours Albert Thomas
F-69003 Lyon
Tel.: + 33 (0) 4 78 68 28 31
Fax: + 33 (0) 4 78 85 18 56
infofrance@fundermax.at
www.fundermax.at

FunderMax India Pvt. Ltd.
504, 5th floor, Brigade Towers
135, Brigade Road
IND-560025 Bangalore
Tel.: +91 80 4111 7004
Fax: +91 80 4112 7053
officeindia@fundermax.biz
www.fundermax.at

JAGO AG
Industriestrasse 21
CH-5314 Kleindöttingen
Tel.: + 41 (0) 56-268 81 31
Fax: + 41 (0) 56-268 81 51
info@jago.ch
www.jago.ch

ISOVOLTA S.A.U
Avda. Salvatella, 85-97
Poligono Industrial Can Salvatella
E-08210 Barberà del Vallès (Barcelona)
Tel.: + 34-937 297 550
Fax: + 34-937 190 511
info@isovolta.es
www.isovolta.es

ISO-MAX Spółka Akcyjna
ul. Rybitwy 12
PL-30 722 Krakau
Tel.: + 48-12-65 34 528
Fax: + 48-12-65 70 545
biuro@iso-max.com.pl
www.iso-max.com.pl



FunderMax GmbH
Klagenfurter Straße 87-89
A-9300 St. Veit / Glan

Tel.: + 43 (0) 5/9494-0
Fax: + 43 (0) 5/9494-4200
office@fundermax.at
www.fundermax.at

A Company of the *Constantia* INDUSTRIES AG